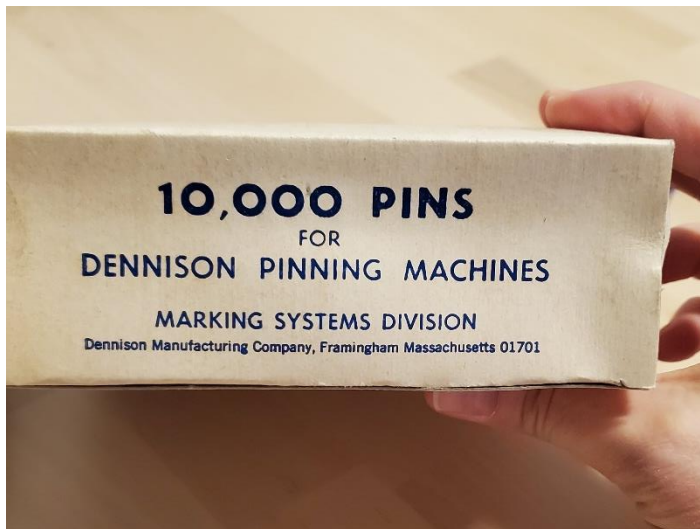
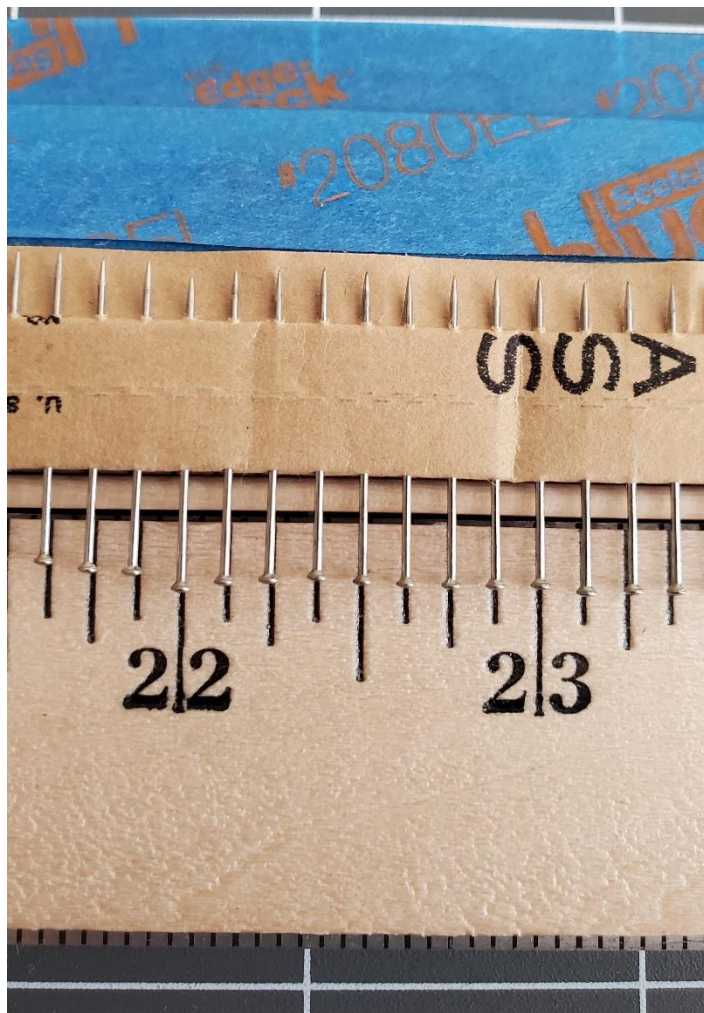
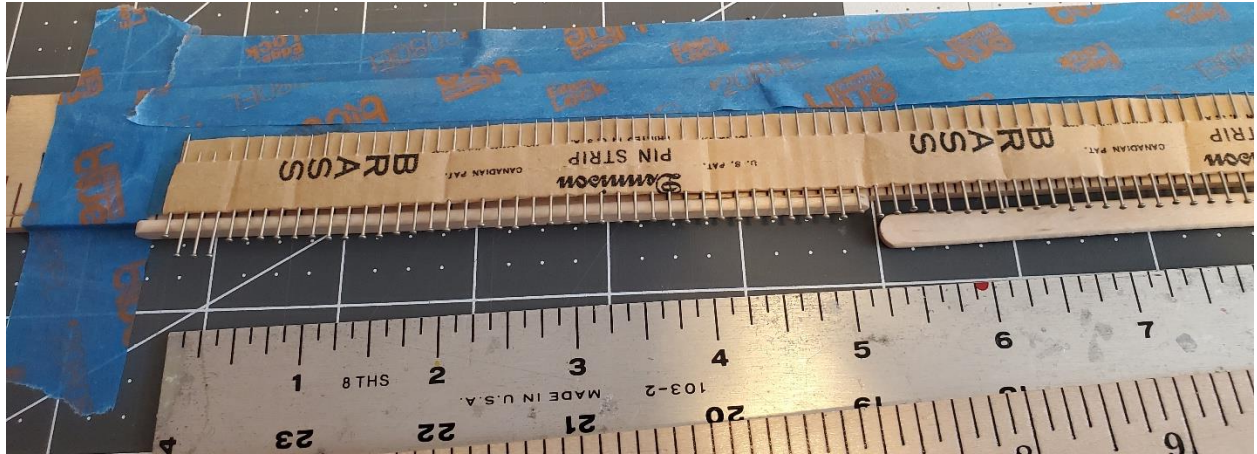


Here are a few photos of my process of making the 16 to the inch comb. I started with the information on Parry's website: bookartbook.art. Look for the section "microcomb" and "hot glue summer" 😊 I used his method of securing the pins to the tape exactly as he wrote it. Basically, cut a strip of Dennison pins to fit your tank. You can level all the pins if needed by tapping the pointy ends on the table. Then tape some painters tape to a yardstick with the sticky side of the painters tape sticking up. This is tricky, I taped it down on three sides, not including the side where I would be glueing the pins to the other yardstick and lined up the tape with the edge of the yardstick. I folded back the top of the paper behind the pins and put my strip of pins on the edge of the tape with the pin paper sticking to the tape. I cut my yardsticks down to just fit in my tank after I made the comb, but you could do it now also.



Next I inserted a couple of thin (~1/4 inch wide) popsicle/craft sticks (with 1/4 inch side vertically and thin side between the pins and the glueing yardstick - see photo) to create some space between the paper on the pins and the glue so I didn't glue the paper to the yardstick (learned the hard way, first comb was a gluey mess). I used regular Lineco PVA adhesive. I had to pull the pins out of the paper a little so there was still about 3/16" overhang of pin to glue to the yardstick after putting the popsicle stick spacers in. I used the markings on the yardstick to pull out the pins and make sure they were all even.





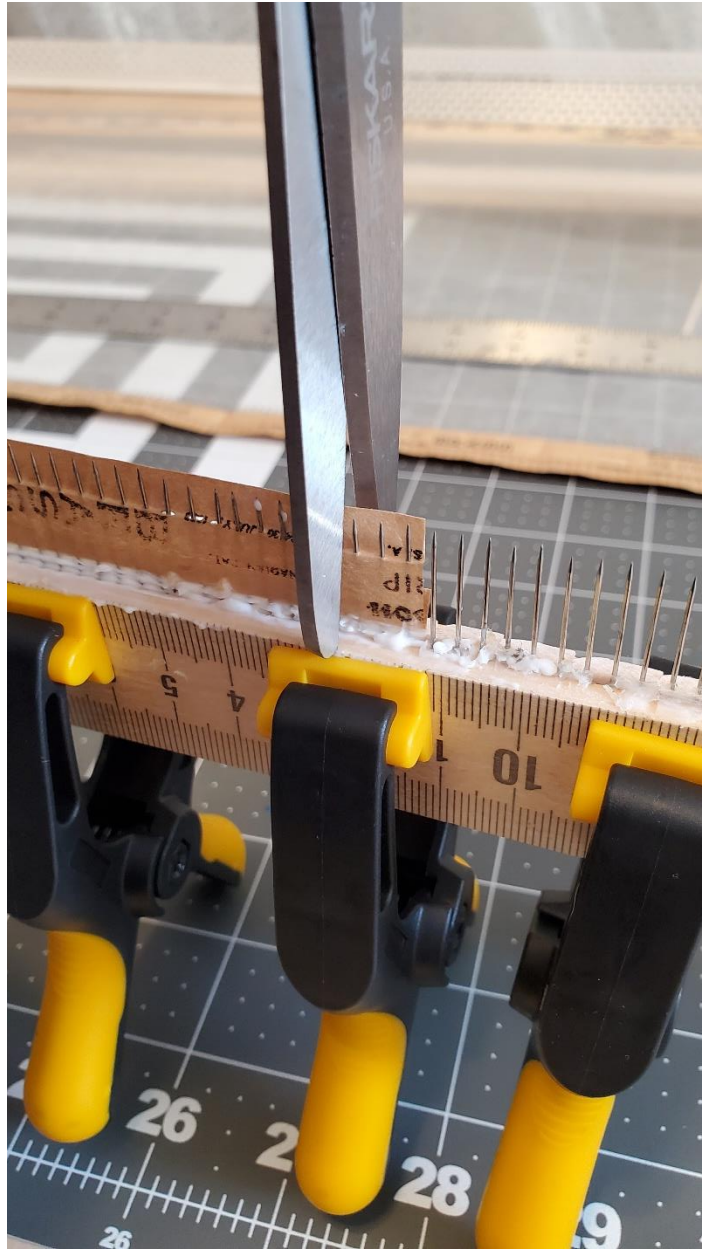
I had to elevate my glueing yardstick just a little to be even with the tape yardstick holding the paper strip of pins. The tape wasn't lying flat so the pins were floating a little above the glueing yardstick. I used my thin, metal ruler underneath and it gave me the right elevation for the pins to lie on the glueing yardstick.

I ran a bead of glue along the heads of the pins. I left this to dry overnight. When it was dry, I glued a 1/8" x 1" piece of balsawood to the pins, to create a space between the 2 rows of pins so when I offset the pins in the final comb, there was space for paint to flow through and not get clogged up. I clamped this and left it to dry overnight. In the meantime, I created another yardstick with another row of paper and pins as above. I found pulling the paper off was much easier for me if I cut into the strip every 4 or 5 pins so I was pulling off a small section at a time.

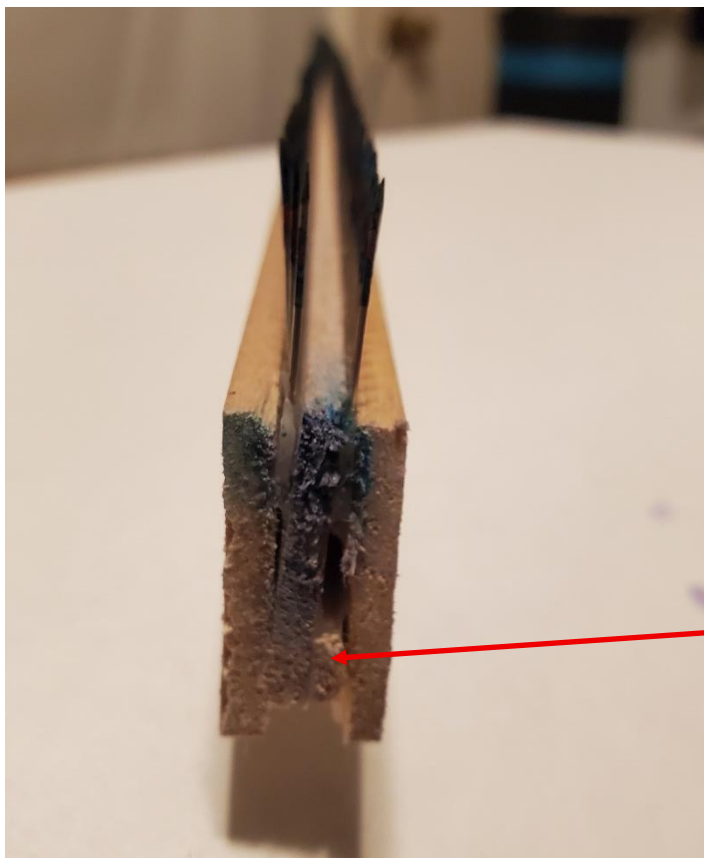


I used popsicle sticks as spacers here to keep the glue and the paper the pins are on separated.





I applied glue to the second yardstick and pins, the one that didn't have the balsawood stuck to it and then to line up the 2 rows of pins in an offset pattern, I used a white background with no direct light (it created confusing shadows for me) and eyeballed the offset. I had to look directly at a small patch of pins to accomplish this. If you are looking at an angle at all, the pins don't look offset. As soon as they looked offset, I carefully clamped them every few inches and waited for it to dry. Because I am impatient, I used the comb the next day, but because I used PVA, the glue got wet again when I rinsed the comb. This messed with a couple of the pins on the end, so don't do that! Let the glue cure for a few days and you should be fine.



I inserted a popsicle stick as a spacer here to keep the three layers of wood pretty straight.

